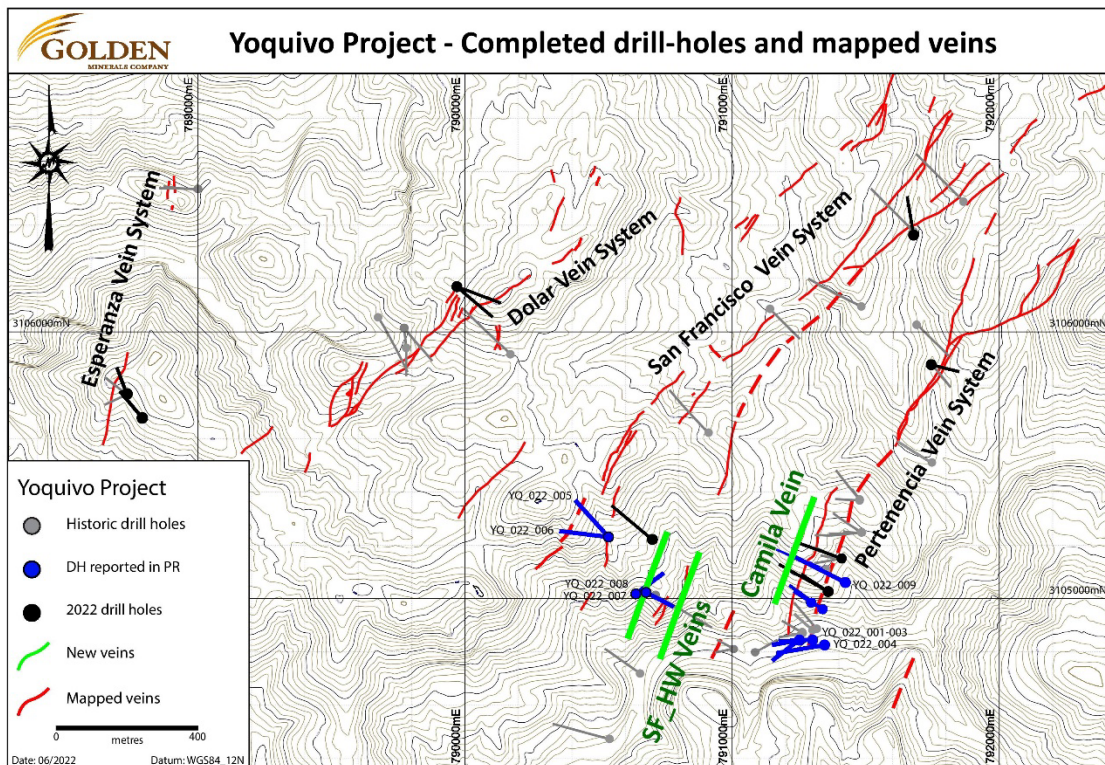


# Yoquivo

## Gold-Silver Project

### Chihuahua State, Mexico

## 2022 (Third) Drill Program: First nine holes, reported July 7, 2022



**Yoquivo Gold-Silver Project - 2022 Drill Program - Collars**

Hole ID	Easting WGS84	Northing WGS84	Elevation (m)	Azimuth	Inclination	Length (m)
YQ_022_001	791248	3104847	1996	260	-45	143
YQ_022_002	791248	3104845	1997	230	-45	180
YQ_022_003	791301	3104853	2000	265	-45	180
YQ_022_004	791345	3104831	2006	260	-45	261
YQ_022_005	790540	3105225	2213	280	-45	265
YQ_022_006	790541	3105226	2212	320	-45	261
YQ_022_007	790641	3105025	2118	55	-45	175
YQ_022_008	790685	3105026	2123	120	-45	162
YQ_022_009	791421	3105056	2063	295	-45	306

Projected Coordinate System

WGS 84 datum / UTM zone 12N

Yoquivo Gold-Silver Project - 2022 Drill Program - Assays						
Hole ID	Sample ID	From (m)	To (m)	Interval (m)	Au (ppm)	Ag (ppm)
YQ_022_001	MCD006401	7.35	8.05	0.70	0.00	0.6
YQ_022_001	MCD006402	8.05	8.50	0.45	0.00	0.3
YQ_022_001	MCD006403	8.50	9.70	1.20	0.00	0.3
YQ_022_001	MCD006404	9.70	10.90	1.20	0.00	0.3
YQ_022_001	MCD006405	10.90	11.25	0.35	0.00	0.3
YQ_022_001	MCD006406	11.25	12.20	0.95	0.00	0.3
YQ_022_001	MCD006407	15.70	16.65	0.95	0.00	0.3
YQ_022_001	MCD006408	16.65	17.00	0.35	0.00	0.3
YQ_022_001	MCD006409	17.00	17.55	0.55	0.01	0.8
YQ_022_001	MCD006411	30.95	32.00	1.05	0.00	3.1
YQ_022_001	MCD006412	32.00	32.85	0.85	0.02	2.8
YQ_022_001	MCD006413	32.85	33.15	0.30	0.01	2.1
YQ_022_001	MCD006414	33.15	34.25	1.10	0.00	1.0
YQ_022_001	MCD006415	39.65	40.20	0.55	0.00	0.3
YQ_022_001	MCD006416	40.22	41.55	1.33	0.00	0.3
YQ_022_001	MCD006417	41.55	42.20	0.65	0.00	0.5
YQ_022_001	MCD006418	42.20	43.40	1.20	0.00	0.6
YQ_022_001	MCD006419	50.70	51.80	1.10	0.50	68.5
YQ_022_001	MCD006421	51.80	52.00	0.20	0.09	8.9
YQ_022_001	MCD006422	52.00	53.00	1.00	0.01	1.9
YQ_022_001	MCD006423	66.45	67.20	0.75	0.02	1.7
YQ_022_001	MCD006424	67.20	67.80	0.60	0.03	3.3
YQ_022_001	MCD006425	67.80	68.55	0.75	0.01	1.1
YQ_022_001	MCD006426	80.40	81.90	1.50	0.00	0.3
YQ_022_001	MCD006427	81.90	82.30	0.40	0.00	0.3
YQ_022_001	MCD006428	82.30	83.00	0.70	0.00	0.3
YQ_022_001	MCD006429	83.00	84.10	1.10	0.00	0.3
YQ_022_001	MCD006431	97.35	98.55	1.20	0.19	1.4
YQ_022_001	MCD006432	98.55	98.65	0.10	0.16	1.4
YQ_022_001	MCD006433	98.65	100.15	1.50	0.01	0.3
YQ_022_001	MCD006434	102.80	104.20	1.40	0.00	0.3
YQ_022_001	MCD006435	104.20	104.65	0.45	0.01	1.2
YQ_022_001	MCD006436	104.65	105.55	0.90	0.00	0.3
YQ_022_001	MCD006437	112.10	112.80	0.70	0.00	0.3
YQ_022_001	MCD006438	112.80	112.95	0.15	0.01	0.3
YQ_022_001	MCD006439	112.95	114.35	1.40	0.00	0.3
YQ_022_001	MCD006441	114.35	115.45	1.10	0.01	0.6
YQ_022_001	MCD006442	115.45	116.50	1.05	0.01	0.3
YQ_022_001	MCD006443	116.50	117.00	0.50	0.01	0.3
YQ_022_001	MCD006444	117.00	118.50	1.50	0.00	0.3
YQ_022_001	MCD006445	118.50	120.00	1.50	0.10	0.3
YQ_022_001	MCD006446	120.00	121.00	1.00	0.00	0.3
YQ_022_001	MCD006447	121.00	121.15	0.15	0.04	18.3
YQ_022_001	MCD006448	121.15	122.00	0.85	0.02	9.2
YQ_022_001	MCD006821	122.00	122.75	0.75	0.03	0.7
YQ_022_001	MCD006822	122.75	124.25	1.50	0.01	0.3
YQ_022_001	MCD006823	131.00	131.60	0.60	0.01	0.3
YQ_022_001	MCD006824	131.60	132.10	0.50	0.07	0.3
YQ_022_001	MCD006825	140.00	141.50	1.50	0.05	0.5
YQ_022_001	MCD006826	141.50	141.70	0.20	7.29	0.6
YQ_022_001	MCD006827	141.70	143.00	1.30	0.11	4.5
YQ_022_002	MCD006449	15.76	16.85	1.09	0.00	0.3

Yoquivo Gold-Silver Project - 2022 Drill Program - Assays						
Hole ID	Sample ID	From (m)	To (m)	Interval (m)	Au (ppm)	Ag (ppm)
YQ_022_002	MCD006576	16.85	17.75	0.90	0.00	0.3
YQ_022_002	MCD006577	17.75	18.25	0.50	0.00	0.3
YQ_022_002	MCD006578	18.25	19.15	0.90	0.00	0.3
YQ_022_002	MCD006579	19.15	20.25	1.10	0.00	0.8
YQ_022_002	MCD006581	20.25	21.00	0.75	0.01	0.3
YQ_022_002	MCD006582	21.00	22.00	1.00	0.00	0.3
YQ_022_002	MCD006583	22.00	22.05	0.05	0.01	0.6
YQ_022_002	MCD006584	22.05	22.45	0.40	0.00	0.3
YQ_022_002	MCD006585	29.00	30.40	1.40	0.00	0.3
YQ_022_002	MCD006586	30.40	30.55	0.15	0.00	0.3
YQ_022_002	MCD006587	30.55	31.15	0.60	0.00	0.3
YQ_022_002	MCD006588	44.35	45.50	1.15	0.11	9.1
YQ_022_002	MCD006589	45.50	46.60	1.10	0.08	11.7
YQ_022_002	MCD006591	46.60	47.60	1.00	0.03	4.2
YQ_022_002	MCD006592	47.60	47.90	0.30	0.68	78.5
YQ_022_002	MCD006593	47.90	49.30	1.40	0.40	38.1
YQ_022_002	MCD006594	49.30	50.30	1.00	1.82	297.0
YQ_022_002	MCD006595	50.30	51.15	0.85	0.12	12.4
YQ_022_002	MCD006596	51.15	52.50	1.35	0.03	3.7
YQ_022_002	MCD006597	52.50	54.00	1.50	0.19	20.0
YQ_022_002	MCD006598	54.00	55.50	1.50	0.75	57.7
YQ_022_002	MCD006599	55.50	57.00	1.50	0.11	14.9
YQ_022_002	MCD006626	57.00	58.50	1.50	0.06	11.1
YQ_022_002	MCD006627	58.50	60.00	1.50	0.03	3.7
YQ_022_002	MCD006628	60.00	61.50	1.50	0.03	3.4
YQ_022_002	MCD006629	61.50	63.00	1.50	0.05	7.4
YQ_022_002	MCD006631	63.00	64.30	1.30	0.07	10.3
YQ_022_002	MCD006632	64.30	65.20	0.90	0.07	26.5
YQ_022_002	MCD006633	65.20	65.40	0.20	0.19	82.1
YQ_022_002	MCD006634	65.40	66.90	1.50	0.17	23.8
YQ_022_002	MCD006635	99.60	100.90	1.30	0.00	0.5
YQ_022_002	MCD006636	100.90	101.55	0.65	0.00	0.3
YQ_022_002	MCD006637	101.55	101.70	0.15	0.00	0.8
YQ_022_002	MCD006638	101.70	102.65	0.95	0.02	1.0
YQ_022_002	MCD006639	102.65	104.05	1.40	0.03	0.7
YQ_022_002	MCD006641	123.00	123.95	0.95	0.00	0.3
YQ_022_002	MCD006642	123.95	124.10	0.15	0.00	0.3
YQ_022_002	MCD006643	124.10	125.60	1.50	0.00	0.3
YQ_022_002	MCD006644	130.45	131.60	1.15	0.00	0.3
YQ_022_002	MCD006645	131.60	132.70	1.10	0.00	0.3
YQ_022_002	MCD006646	132.70	133.40	0.70	0.00	0.3
YQ_022_002	MCD006647	133.40	134.20	0.80	0.00	0.3
YQ_022_002	MCD006648	134.20	134.70	0.50	0.00	0.3
YQ_022_002	MCD006649	134.70	136.00	1.30	0.00	0.3
YQ_022_002	MCD006651	136.00	137.50	1.50	0.00	0.3
YQ_022_002	MCD006652	137.50	139.00	1.50	0.02	0.8
YQ_022_002	MCD006653	139.00	139.90	0.90	0.00	0.3
YQ_022_002	MCD006654	139.90	140.20	0.30	0.01	0.3
YQ_022_002	MCD006655	140.20	140.60	0.40	0.00	0.3
YQ_022_002	MCD006656	140.60	141.55	0.95	0.00	0.3
YQ_022_002	MCD006657	141.55	141.65	0.10	0.00	0.3
YQ_022_002	MCD006658	141.65	143.15	1.50	0.00	0.3

Yoquivo Gold-Silver Project - 2022 Drill Program - Assays						
Hole ID	Sample ID	From (m)	To (m)	Interval (m)	Au (ppm)	Ag (ppm)
YQ_022_002	MCD006659	145.75	146.45	0.70	0.00	1.6
YQ_022_002	MCD006661	146.45	147.00	0.55	0.01	1.6
YQ_022_002	MCD006662	147.00	147.65	0.65	0.01	2.1
YQ_022_002	MCD006663	147.65	147.95	0.30	0.00	1.9
YQ_022_003	MCD006664	14.50	15.85	1.35	0.00	1.0
YQ_022_003	MCD006665	15.85	16.30	0.45	0.00	1.6
YQ_022_003	MCD006666	16.30	17.70	1.40	0.00	0.7
YQ_022_003	MCD006667	17.70	19.10	1.40	0.01	1.1
YQ_022_003	MCD006668	19.10	19.60	0.50	0.01	1.0
YQ_022_003	MCD006669	19.60	21.10	1.50	0.00	0.9
YQ_022_003	MCD006671	27.50	29.00	1.50	0.00	0.8
YQ_022_003	MCD006672	29.00	29.75	0.75	0.01	1.2
YQ_022_003	MCD006673	29.75	30.60	0.85	0.00	1.4
YQ_022_003	MCD006674	30.60	31.60	1.00	0.00	0.9
YQ_022_003	MCD006675	31.60	33.00	1.40	0.00	0.6
YQ_022_003	MCD006676	33.00	33.30	0.30	0.01	0.7
YQ_022_003	MCD006677	69.90	70.80	0.90	0.29	17.2
YQ_022_003	MCD006678	70.80	71.80	1.00	0.01	0.9
YQ_022_003	MCD006679	71.80	71.90	0.10	0.01	3.1
YQ_022_003	MCD006681	71.90	72.90	1.00	0.41	59.8
YQ_022_003	MCD006682	72.90	73.20	0.30	3.10	753.0
YQ_022_003	MCD006683	73.20	74.45	1.25	0.09	2.8
YQ_022_003	MCD006684	81.10	82.25	1.15	0.01	0.8
YQ_022_003	MCD006685	82.25	82.45	0.20	0.66	61.6
YQ_022_003	MCD006686	82.45	84.35	1.90	0.01	2.1
YQ_022_003	MCD006687	84.35	84.80	0.45	0.75	49.6
YQ_022_003	MCD006688	84.80	85.75	0.95	0.08	1.6
YQ_022_003	MCD006689	85.75	85.85	0.10	0.01	0.6
YQ_022_003	MCD006691	85.85	87.00	1.15	0.31	2.2
YQ_022_003	MCD006692	87.00	87.70	0.70	0.01	0.9
YQ_022_003	MCD006693	87.70	88.70	1.00	0.01	0.8
YQ_022_003	MCD006694	88.70	93.65	4.95	0.02	2.2
YQ_022_003	MCD006695	93.65	94.90	1.25	0.03	1.4
YQ_022_003	MCD006696	94.90	95.85	0.95	0.12	11.1
YQ_022_003	MCD006697	95.85	96.95	1.10	0.11	6.4
YQ_022_003	MCD006698	96.95	97.95	1.00	0.03	2.4
YQ_022_003	MCD006699	105.00	105.70	0.70	0.01	1.3
YQ_022_003	MCD006701	105.70	105.90	0.20	0.07	6.5
YQ_022_003	MCD006702	105.90	107.60	1.70	0.02	1.0
YQ_022_003	MCD006703	107.60	108.30	0.70	0.01	0.9
YQ_022_003	MCD006704	108.30	109.60	1.30	0.60	14.4
YQ_022_003	MCD006705	109.60	109.90	0.30	0.57	25.0
YQ_022_003	MCD006706	109.90	110.25	0.35	0.66	45.8
YQ_022_003	MCD006707	110.25	111.10	0.85	0.17	25.0
YQ_022_003	MCD006708	111.10	112.60	1.50	0.04	10.7
YQ_022_003	MCD006709	131.45	132.60	1.15	0.00	0.6
YQ_022_003	MCD006711	132.60	133.65	1.05	0.00	1.4
YQ_022_003	MCD006712	133.65	134.70	1.05	0.01	3.1
YQ_022_003	MCD006713	134.70	143.60	8.90	0.00	0.5
YQ_022_003	MCD006714	143.60	144.25	0.65	0.01	0.7
YQ_022_003	MCD006715	144.25	145.10	0.85	0.00	0.3
YQ_022_003	MCD006716	145.10	146.30	1.20	0.01	0.6

Yoquivo Gold-Silver Project - 2022 Drill Program - Assays						
Hole ID	Sample ID	From (m)	To (m)	Interval (m)	Au (ppm)	Ag (ppm)
YQ_022_003	MCD006717	146.30	146.90	0.60	0.00	0.3
YQ_022_003	MCD006718	156.65	157.25	0.60	0.01	0.9
YQ_022_003	MCD006719	165.00	166.50	1.50	0.01	0.3
YQ_022_003	MCD006721	166.50	167.80	1.30	0.01	0.3
YQ_022_003	MCD006722	167.80	168.00	0.20	0.01	0.3
YQ_022_003	MCD006723	168.00	168.35	0.35	0.00	0.3
YQ_022_003	MCD006724	168.35	169.85	1.50	0.00	0.6
YQ_022_003	MCD006725	169.85	170.40	0.55	0.13	0.9
YQ_022_003	MCD006726	170.40	171.65	1.25	0.01	0.3
YQ_022_004	MCD006727	18.85	19.85	1.00	0.00	0.3
YQ_022_004	MCD006728	19.85	20.00	0.15	0.00	0.5
YQ_022_004	MCD006729	20.00	20.50	0.50	0.00	0.3
YQ_022_004	MCD006731	24.10	24.35	0.25	0.02	0.7
YQ_022_004	MCD006732	37.25	38.65	1.40	0.00	0.8
YQ_022_004	MCD006733	38.65	39.35	0.70	0.00	0.6
YQ_022_004	MCD006734	39.35	40.05	0.70	0.01	1.3
YQ_022_004	MCD006735	40.05	40.20	0.15	0.00	0.5
YQ_022_004	MCD006736	40.20	40.55	0.35	0.00	0.8
YQ_022_004	MCD006737	40.55	41.45	0.90	0.01	2.1
YQ_022_004	MCD006738	41.45	42.80	1.35	0.01	1.4
YQ_022_004	MCD006739	42.80	43.20	0.40	0.00	0.6
YQ_022_004	MCD006741	43.20	44.00	0.80	0.00	0.7
YQ_022_004	MCD006742	44.00	45.00	1.00	0.00	1.1
YQ_022_004	MCD006743	45.00	46.50	1.50	0.01	1.2
YQ_022_004	MCD006744	70.45	72.00	1.55	0.00	0.3
YQ_022_004	MCD006745	72.00	72.35	0.35	0.00	0.3
YQ_022_004	MCD006746	72.35	72.90	0.55	0.00	0.3
YQ_022_004	MCD006747	72.90	73.45	0.55	0.00	0.3
YQ_022_004	MCD006748	73.45	73.95	0.50	0.00	0.3
YQ_022_004	MCD006749	73.95	74.80	0.85	0.00	0.3
YQ_022_004	MCD006751	107.15	107.75	0.60	0.06	3.7
YQ_022_004	MCD006752	107.75	108.00	0.25	0.02	2.5
YQ_022_004	MCD006753	108.00	109.50	1.50	0.02	1.3
YQ_022_004	MCD006754	109.50	111.00	1.50	0.01	1.0
YQ_022_004	MCD006755	111.00	112.50	1.50	0.03	1.7
YQ_022_004	MCD006756	112.50	114.00	1.50	0.01	0.9
YQ_022_004	MCD006757	124.00	124.35	0.35	0.07	0.3
YQ_022_004	MCD006758	124.35	124.60	0.25	0.01	0.3
YQ_022_004	MCD006759	124.60	125.35	0.75	0.01	0.7
YQ_022_004	MCD006761	153.20	154.35	1.15	0.01	1.9
YQ_022_004	MCD006762	154.35	154.85	0.50	0.02	4.1
YQ_022_004	MCD006763	154.85	155.15	0.30	0.59	131.0
YQ_022_004	MCD006764	155.15	156.55	1.40	0.04	3.4
YQ_022_004	MCD006765	156.55	157.50	0.95	0.01	1.6
YQ_022_004	MCD006766	157.50	159.00	1.50	0.02	1.5
YQ_022_004	MCD006767	159.00	160.40	1.40	0.02	3.6
YQ_022_004	MCD006768	160.40	161.25	0.85	0.02	1.5
YQ_022_004	MCD006769	161.25	162.70	1.45	0.02	2.4
YQ_022_004	MCD006771	162.70	163.40	0.70	0.13	18.0
YQ_022_004	MCD006772	163.40	163.65	0.25	0.91	112.0
YQ_022_004	MCD006773	163.65	163.95	0.30	0.09	8.5
YQ_022_004	MCD006774	163.95	164.20	0.25	0.14	14.5



Yoquivo Gold-Silver Project - 2022 Drill Program - Assays						
Hole ID	Sample ID	From (m)	To (m)	Interval (m)	Au (ppm)	Ag (ppm)
YQ_022_004	MCD006775	164.20	164.90	0.70	1.08	70.0
YQ_022_004	MCD006777	164.90	165.30	0.40	0.07	9.0
YQ_022_004	MCD006778	165.30	166.35	1.05	0.05	2.2
YQ_022_004	MCD006779	183.85	184.05	0.20	0.21	2.6
YQ_022_004	MCD006781	184.05	184.60	0.55	0.01	1.5
YQ_022_004	MCD006782	184.60	184.85	0.25	0.04	4.2
YQ_022_004	MCD006783	184.85	186.00	1.15	0.02	2.5
YQ_022_004	MCD006784	188.60	190.10	1.50	0.00	0.3
YQ_022_004	MCD006785	190.10	190.45	0.35	0.00	0.3
YQ_022_004	MCD006786	190.45	191.90	1.45	0.00	0.3
YQ_022_004	MCD006787	191.90	192.15	0.25	0.01	0.3
YQ_022_004	MCD006788	192.15	193.20	1.05	0.00	0.3
YQ_022_004	MCD006789	193.20	193.40	0.20	0.00	0.6
YQ_022_004	MCD006791	193.40	194.40	1.00	0.00	0.7
YQ_022_004	MCD006792	194.40	195.40	1.00	0.00	0.3
YQ_022_004	MCD006793	195.40	195.70	0.30	0.00	0.5
YQ_022_004	MCD006794	195.70	197.15	1.45	0.01	0.9
YQ_022_004	MCD006795	203.55	204.45	0.90	0.01	1.3
YQ_022_004	MCD006796	204.45	205.15	0.70	0.01	0.3
YQ_022_004	MCD006797	207.00	208.15	1.15	0.01	0.6
YQ_022_004	MCD006798	208.15	208.35	0.20	0.00	0.3
YQ_022_004	MCD006799	208.35	209.85	1.50	0.00	0.5
YQ_022_004	MCD006801	209.85	210.20	0.35	0.00	0.3
YQ_022_004	MCD006802	210.20	210.45	0.25	0.00	0.3
YQ_022_004	MCD006803	210.45	210.75	0.30	0.02	0.3
YQ_022_004	MCD006805	210.75	212.15	1.40	0.01	0.3
YQ_022_004	MCD006806	212.25	213.75	1.50	0.00	0.3
YQ_022_004	MCD006807	213.75	214.40	0.65	0.00	0.3
YQ_022_004	MCD006808	214.40	214.65	0.25	0.02	0.5
YQ_022_004	MCD006809	214.65	216.10	1.45	0.00	0.3
YQ_022_004	MCD006811	216.10	217.10	1.00	0.01	0.3
YQ_022_004	MCD006812	217.10	218.50	1.40	0.01	0.3
YQ_022_004	MCD006813	218.50	219.25	0.75	0.00	0.3
YQ_022_004	MCD006814	225.00	226.05	1.05	0.00	0.7
YQ_022_004	MCD006815	226.05	227.05	1.00	0.00	0.8
YQ_022_004	MCD006816	227.05	228.55	1.50	0.03	5.7
YQ_022_004	MCD006817	248.15	249.00	0.85	0.00	0.3
YQ_022_004	MCD006818	254.30	254.55	0.25	0.00	0.3
YQ_022_004	MCD006819	254.55	255.95	1.40	0.00	0.3
YQ_022_005	MCD007148	5.45	6.35	0.90	0.07	42.1
YQ_022_005	MCD007149	6.35	7.95	1.60	0.05	36.0
YQ_022_005	MCD007151	7.95	9.00	1.05	0.09	80.2
YQ_022_005	MCD007152	9.00	10.25	1.25	0.09	214.0
YQ_022_005	MCD007153	10.25	10.45	0.20	0.09	18.9
YQ_022_005	MCD007154	10.45	10.85	0.40	0.15	57.2
YQ_022_005	MCD007155	10.85	11.75	0.90	0.07	22.4
YQ_022_005	MCD007156	11.75	12.00	0.25	0.01	9.9
YQ_022_005	MCD007157	12.00	13.50	1.50	0.07	21.9
YQ_022_005	MCD007158	13.50	14.30	0.80	0.02	4.6
YQ_022_005	MCD006828	24.10	25.05	0.95	0.01	0.5
YQ_022_005	MCD006829	25.05	26.35	1.30	0.22	2.1
YQ_022_005	MCD006831	26.35	26.85	0.50	0.01	0.3

Yoquivo Gold-Silver Project - 2022 Drill Program - Assays						
Hole ID	Sample ID	From (m)	To (m)	Interval (m)	Au (ppm)	Ag (ppm)
YQ_022_005	MCD006832	53.35	54.00	0.65	0.01	0.3
YQ_022_005	MCD006833	54.00	55.25	1.25	0.01	0.3
YQ_022_005	MCD006834	69.00	69.70	0.70	0.02	2.2
YQ_022_005	MCD006835	69.70	71.10	1.40	0.04	4.8
YQ_022_005	MCD006836	71.10	72.00	0.90	0.03	4.2
YQ_022_005	MCD006837	90.30	91.50	1.20	0.01	1.9
YQ_022_005	MCD006838	91.50	92.00	0.50	0.05	6.6
YQ_022_005	MCD006839	92.00	92.55	0.55	0.04	3.4
YQ_022_005	MCD006841	97.05	97.80	0.75	0.02	2.2
YQ_022_005	MCD006842	97.80	98.05	0.25	0.08	6.3
YQ_022_005	MCD006843	98.05	99.15	1.10	0.02	3.4
YQ_022_005	MCD006844	125.45	126.00	0.55	0.02	0.3
YQ_022_005	MCD006845	126.00	126.40	0.40	0.15	0.3
YQ_022_005	MCD006846	126.40	127.70	1.30	0.24	0.3
YQ_022_005	MCD006847	153.00	153.65	0.65	0.01	1.7
YQ_022_005	MCD006848	153.65	154.20	0.55	0.05	8.7
YQ_022_005	MCD006849	154.20	154.80	0.60	0.00	0.3
YQ_022_005	MCD006851	154.80	156.30	1.50	0.01	0.8
YQ_022_005	MCD006852	156.30	157.30	1.00	0.01	1.3
YQ_022_005	MCD006853	157.30	158.40	1.10	0.00	0.3
YQ_022_005	MCD006854	158.40	159.10	0.70	0.16	4.3
YQ_022_005	MCD006855	159.10	159.80	0.70	0.00	0.3
YQ_022_005	MCD006856	159.80	161.30	1.50	0.09	0.5
YQ_022_005	MCD006857	161.30	162.80	1.50	0.00	1.1
YQ_022_005	MCD006858	162.80	164.30	1.50	0.02	0.3
YQ_022_005	MCD006859	164.30	165.80	1.50	0.03	0.3
YQ_022_005	MCD006861	165.80	167.10	1.30	0.00	0.3
YQ_022_005	MCD006862	167.10	168.65	1.55	0.01	0.3
YQ_022_005	MCD006863	168.65	169.85	1.20	0.00	0.3
YQ_022_005	MCD006864	169.85	170.65	0.80	0.00	0.3
YQ_022_005	MCD006865	170.65	170.90	0.25	0.00	0.3
YQ_022_005	MCD006866	170.90	172.15	1.25	0.00	0.3
YQ_022_005	MCD006867	172.15	183.00	10.85	0.01	2.7
YQ_022_005	MCD006868	183.00	184.50	1.50	0.00	0.6
YQ_022_005	MCD006869	184.50	184.75	0.25	0.02	1.5
YQ_022_005	MCD006871	184.75	185.90	1.15	0.03	1.6
YQ_022_005	MCD006872	185.90	186.40	0.50	0.01	1.5
YQ_022_005	MCD006873	186.40	187.60	1.20	0.08	13.9
YQ_022_005	MCD006874	187.60	188.35	0.75	0.01	3.3
YQ_022_005	MCD006875	188.35	188.60	0.25	0.02	2.6
YQ_022_005	MCD006876	188.60	190.10	1.50	0.01	2.1
YQ_022_005	MCD006877	196.20	197.70	1.50	0.00	0.3
YQ_022_005	MCD006878	197.70	198.00	0.30	0.01	2.0
YQ_022_005	MCD006879	198.00	199.50	1.50	0.00	0.3
YQ_022_005	MCD006881	231.00	232.45	1.45	0.01	1.3
YQ_022_005	MCD006882	232.45	232.75	0.30	1.59	368.0
YQ_022_005	MCD006883	232.75	233.05	0.30	0.02	5.5
YQ_022_005	MCD006884	233.05	233.25	0.20	0.36	161.0
YQ_022_005	MCD006885	233.25	234.30	1.05	0.01	3.1
YQ_022_005	MCD006886	234.30	235.30	1.00	0.01	2.9
YQ_022_005	MCD006887	235.30	235.75	0.45	0.03	8.0
YQ_022_005	MCD006889	235.75	236.05	0.30	0.22	46.6



Yoquivo Gold-Silver Project - 2022 Drill Program - Assays						
Hole ID	Sample ID	From (m)	To (m)	Interval (m)	Au (ppm)	Ag (ppm)
YQ_022_005	MCD006891	236.05	237.50	1.45	0.01	1.4
YQ_022_005	MCD006892	237.50	239.10	1.60	0.00	1.0
YQ_022_005	MCD006893	239.10	240.35	1.25	0.00	1.4
YQ_022_005	MCD006894	240.35	241.90	1.55	0.00	1.2
YQ_022_005	MCD006895	241.90	242.80	0.90	0.00	2.6
YQ_022_005	MCD006896	242.80	244.30	1.50	0.01	2.3
YQ_022_005	MCD006897	244.30	244.85	0.55	0.01	3.5
YQ_022_005	MCD006898	244.85	246.35	1.50	0.01	1.4
YQ_022_005	MCD006899	246.35	247.80	1.45	0.01	1.9
YQ_022_005	MCD006901	247.80	249.00	1.20	0.01	1.1
YQ_022_005	MCD006902	249.00	250.10	1.10	0.00	0.3
YQ_022_005	MCD006903	250.10	251.50	1.40	0.00	0.3
YQ_022_005	MCD006904	251.50	252.00	0.50	0.00	0.3
YQ_022_005	MCD006905	252.00	253.50	1.50	0.04	0.3
YQ_022_005	MCD006906	253.50	254.90	1.40	0.00	0.3
YQ_022_005	MCD006907	254.90	255.95	1.05	0.00	1.1
YQ_022_005	MCD006908	255.95	256.45	0.50	0.00	0.3
YQ_022_005	MCD006909	256.45	257.80	1.35	0.00	0.9
YQ_022_006	MCD006911	6.60	7.95	1.35	0.04	289.0
YQ_022_006	MCD006912	7.95	9.10	1.15	0.03	60.7
YQ_022_006	MCD006913	9.10	10.05	0.95	0.35	294.0
YQ_022_006	MCD006914	10.05	10.80	0.75	0.35	298.0
YQ_022_006	MCD006915	10.80	12.00	1.20	0.22	62.2
YQ_022_006	MCD006916	12.00	13.50	1.50	1.53	35.6
YQ_022_006	MCD006917	13.50	14.75	1.25	0.02	97.0
YQ_022_006	MCD006918	23.60	24.55	0.95	0.00	0.5
YQ_022_006	MCD006919	24.55	24.80	0.25	0.01	0.3
YQ_022_006	MCD006921	24.80	26.25	1.45	0.00	0.3
YQ_022_006	MCD006922	26.25	27.75	1.50	0.00	0.3
YQ_022_006	MCD006923	27.75	29.15	1.40	0.36	37.6
YQ_022_006	MCD006924	29.15	30.65	1.50	0.00	0.3
YQ_022_006	MCD006925	30.65	32.15	1.50	0.00	0.3
YQ_022_006	MCD006926	32.15	33.40	1.25	0.00	0.3
YQ_022_006	MCD006927	33.40	34.65	1.25	0.01	0.8
YQ_022_006	MCD006928	34.65	36.00	1.35	0.00	0.3
YQ_022_006	MCD006929	36.00	37.50	1.50	0.00	0.3
YQ_022_006	MCD006931	57.00	58.15	1.15	0.00	0.6
YQ_022_006	MCD006932	58.15	58.40	0.25	0.01	1.4
YQ_022_006	MCD006933	58.40	58.65	0.25	0.02	1.4
YQ_022_006	MCD006934	58.85	60.00	1.15	0.00	0.6
YQ_022_006	MCD006935	60.00	61.50	1.50	0.00	0.3
YQ_022_006	MCD006936	61.50	62.85	1.35	0.05	2.1
YQ_022_006	MCD006937	62.85	63.00	0.15	0.48	58.3
YQ_022_006	MCD006938	63.00	64.45	1.45	0.00	0.8
YQ_022_006	MCD006939	75.00	75.80	0.80	0.00	0.3
YQ_022_006	MCD006941	75.80	76.25	0.45	0.00	0.3
YQ_022_006	MCD006942	76.25	77.75	1.50	0.00	0.3
YQ_022_006	MCD006943	82.70	84.15	1.45	0.01	0.8
YQ_022_006	MCD006944	84.15	84.60	0.45	0.00	0.3
YQ_022_006	MCD006945	84.60	85.95	1.35	0.00	0.7
YQ_022_006	MCD006946	85.95	86.65	0.70	0.00	0.8
YQ_022_006	MCD006947	86.65	87.20	0.55	0.02	3.9

Yoquivo Gold-Silver Project - 2022 Drill Program - Assays						
Hole ID	Sample ID	From (m)	To (m)	Interval (m)	Au (ppm)	Ag (ppm)
YQ_022_006	MCD006948	87.20	87.75	0.55	0.02	3.5
YQ_022_006	MCD006949	87.75	87.95	0.20	0.01	2.0
YQ_022_006	MCD006951	87.95	89.45	1.50	0.02	2.6
YQ_022_006	MCD006952	89.45	90.90	1.45	0.01	1.0
YQ_022_006	MCD006953	90.90	91.40	0.50	0.01	0.7
YQ_022_006	MCD006954	91.40	92.80	1.40	0.01	1.3
YQ_022_006	MCD006955	92.80	94.30	1.50	0.00	0.5
YQ_022_006	MCD006956	99.90	101.40	1.50	0.03	0.3
YQ_022_006	MCD006957	101.40	102.90	1.50	0.01	0.3
YQ_022_006	MCD006958	102.90	104.45	1.55	0.00	0.3
YQ_022_006	MCD006959	104.45	105.95	1.50	0.01	0.3
YQ_022_006	MCD006961	105.95	107.45	1.50	0.04	1.2
YQ_022_006	MCD006962	119.90	121.40	1.50	0.01	0.3
YQ_022_006	MCD006963	121.40	122.85	1.45	0.00	0.3
YQ_022_006	MCD006964	122.85	124.30	1.45	0.00	0.5
YQ_022_006	MCD006965	124.30	125.80	1.50	0.00	0.5
YQ_022_006	MCD006966	125.80	127.25	1.45	0.00	0.3
YQ_022_006	MCD006967	127.25	128.75	1.50	0.00	0.3
YQ_022_006	MCD006968	128.75	129.45	0.70	0.00	0.3
YQ_022_006	MCD006969	137.35	138.25	0.90	0.00	0.3
YQ_022_006	MCD006971	138.25	139.75	1.50	0.00	0.3
YQ_022_006	MCD006972	139.75	141.00	1.25	0.00	0.3
YQ_022_006	MCD006973	141.00	141.40	0.40	0.02	0.3
YQ_022_006	MCD006974	142.40	143.90	1.50	0.59	7.7
YQ_022_006	MCD006975	150.10	151.50	1.40	0.01	0.3
YQ_022_006	MCD006976	151.50	153.00	1.50	0.00	0.3
YQ_022_006	MCD006977	153.00	153.35	0.35	0.01	0.3
YQ_022_006	MCD006978	153.35	154.85	1.50	0.00	0.3
YQ_022_006	MCD006979	154.85	155.95	1.10	0.00	0.3
YQ_022_006	MCD006981	155.95	156.50	0.55	0.00	0.3
YQ_022_006	MCD006982	156.50	157.50	1.00	0.00	0.3
YQ_022_006	MCD006983	164.55	165.40	0.85	0.00	0.3
YQ_022_006	MCD006984	165.40	166.40	1.00	0.00	0.3
YQ_022_006	MCD006985	166.44	167.85	1.41	0.00	0.3
YQ_022_006	MCD006986	167.85	168.90	1.05	0.00	0.3
YQ_022_006	MCD006987	171.90	173.40	1.50	0.01	0.3
YQ_022_006	MCD006988	173.40	174.90	1.50	0.01	1.0
YQ_022_006	MCD006989	174.90	176.20	1.30	0.09	5.7
YQ_022_006	MCD006991	176.20	177.70	1.50	0.00	1.3
YQ_022_006	MCD006992	177.70	178.90	1.20	0.01	1.1
YQ_022_006	MCD006993	178.90	179.90	1.00	0.02	1.9
YQ_022_006	MCD006994	179.90	180.40	0.50	0.08	14.6
YQ_022_006	MCD006995	180.40	181.35	0.95	0.02	2.9
YQ_022_006	MCD006996	181.35	182.25	0.90	0.00	0.8
YQ_022_006	MCD006997	186.00	187.15	1.15	0.00	0.3
YQ_022_006	MCD006998	187.15	188.66	1.51	0.00	0.3
YQ_022_006	MCD006999	191.00	192.25	1.25	0.00	0.3
YQ_022_006	MCD007001	192.25	193.25	1.00	0.01	1.3
YQ_022_006	MCD007002	193.25	193.45	0.20	0.18	34.7
YQ_022_006	MCD007003	193.45	194.00	0.55	0.01	3.1
YQ_022_006	MCD007004	194.00	194.20	0.20	0.82	128.0
YQ_022_006	MCD007006	194.20	195.20	1.00	0.01	2.9

Yoquivo Gold-Silver Project - 2022 Drill Program - Assays						
Hole ID	Sample ID	From (m)	To (m)	Interval (m)	Au (ppm)	Ag (ppm)
YQ_022_006	MCD007007	195.20	196.35	1.15	0.01	1.5
YQ_022_006	MCD007008	196.35	196.75	0.40	0.01	2.9
YQ_022_006	MCD007009	196.75	197.95	1.20	0.00	0.6
YQ_022_006	MCD007011	197.95	198.95	1.00	0.01	2.1
YQ_022_006	MCD007012	198.95	199.15	0.20	2.43	549.0
YQ_022_006	MCD007014	199.15	200.25	1.10	0.21	123.0
YQ_022_006	MCD007015	200.25	201.35	1.10	0.04	18.9
YQ_022_006	MCD007016	201.35	202.55	1.20	0.00	2.3
YQ_022_006	MCD007017	202.55	203.90	1.35	0.00	2.7
YQ_022_006	MCD007018	203.90	205.40	1.50	0.00	2.7
YQ_022_006	MCD007019	213.55	215.05	1.50	0.00	0.3
YQ_022_006	MCD007021	215.05	216.55	1.50	0.00	0.5
YQ_022_006	MCD007022	216.55	218.05	1.50	0.00	0.3
YQ_022_006	MCD007023	218.05	219.55	1.50	0.00	0.3
YQ_022_006	MCD007024	219.55	221.05	1.50	0.01	1.2
YQ_022_006	MCD007025	221.05	222.55	1.50	0.00	1.1
YQ_022_006	MCD007026	222.55	223.60	1.05	0.00	0.3
YQ_022_006	MCD007027	223.60	224.60	1.00	0.00	1.5
YQ_022_006	MCD007028	224.60	225.30	0.70	0.06	8.0
YQ_022_006	MCD007029	225.30	225.70	0.40	0.06	11.9
YQ_022_006	MCD007031	229.45	230.45	1.00	0.00	1.0
YQ_022_006	MCD007032	230.45	230.65	0.20	0.01	1.5
YQ_022_006	MCD007033	230.65	231.60	0.95	0.00	0.3
YQ_022_006	MCD007034	231.60	232.80	1.20	0.00	1.2
YQ_022_006	MCD007035	232.80	234.00	1.20	0.00	0.3
YQ_022_006	MCD007036	234.00	235.20	1.20	0.00	0.3
YQ_022_006	MCD007037	235.20	236.50	1.30	0.00	0.3
YQ_022_006	MCD007038	236.50	237.50	1.00	0.01	3.0
YQ_022_006	MCD007039	237.50	239.00	1.50	0.00	0.3
YQ_022_006	MCD007041	252.00	253.45	1.45	0.02	1.5
YQ_022_006	MCD007042	253.45	253.70	0.25	0.05	3.2
YQ_022_006	MCD007044	253.70	255.00	1.30	0.00	0.3
YQ_022_006	MCD007045	255.00	256.55	1.55	0.00	0.3
YQ_022_006	MCD007046	256.55	257.45	0.90	0.00	0.5
YQ_022_007	MCD007047	3.30	4.80	1.50	0.00	0.3
YQ_022_007	MCD007048	4.80	5.10	0.30	0.01	0.3
YQ_022_007	MCD007049	5.10	5.85	0.75	0.00	0.3
YQ_022_007	MCD007051	5.85	6.80	0.95	0.00	0.3
YQ_022_007	MCD007052	6.80	7.65	0.85	0.00	0.3
YQ_022_007	MCD007053	7.65	8.40	0.75	0.00	0.3
YQ_022_007	MCD007054	8.40	8.75	0.35	0.00	0.3
YQ_022_007	MCD007055	8.75	9.00	0.25	0.00	0.3
YQ_022_007	MCD007056	12.85	13.15	0.30	0.00	0.3
YQ_022_007	MCD007057	13.15	13.75	0.60	0.00	0.3
YQ_022_007	MCD007058	13.75	14.65	0.90	0.00	0.3
YQ_022_007	MCD007059	16.75	17.35	0.60	0.00	0.3
YQ_022_007	MCD007061	17.35	18.85	1.50	0.00	8.0
YQ_022_007	MCD007062	18.85	20.20	1.35	0.00	9.4
YQ_022_007	MCD007063	20.20	21.00	0.80	0.00	2.5
YQ_022_007	MCD007064	21.00	21.70	0.70	0.00	1.5
YQ_022_007	MCD007065	28.40	29.80	1.40	0.01	0.3
YQ_022_007	MCD007066	29.80	30.10	0.30	0.01	0.3

Yoquivo Gold-Silver Project - 2022 Drill Program - Assays						
Hole ID	Sample ID	From (m)	To (m)	Interval (m)	Au (ppm)	Ag (ppm)
YQ_022_007	MCD007067	30.10	30.75	0.65	0.00	0.3
YQ_022_007	MCD007068	30.75	32.15	1.40	0.06	0.3
YQ_022_007	MCD007069	32.15	32.35	0.20	0.01	0.3
YQ_022_007	MCD007071	32.35	32.80	0.45	0.01	0.8
YQ_022_007	MCD007072	40.00	40.30	0.30	0.01	0.8
YQ_022_007	MCD007073	40.30	40.50	0.20	0.00	0.6
YQ_022_007	MCD007074	40.50	40.85	0.35	0.00	1.3
YQ_022_007	MCD007075	44.70	46.20	1.50	0.00	0.8
YQ_022_007	MCD007076	46.20	46.55	0.35	0.02	0.3
YQ_022_007	MCD007077	46.55	47.90	1.35	0.02	1.1
YQ_022_007	MCD007078	47.90	49.38	1.48	0.01	0.9
YQ_022_007	MCD007079	49.38	50.75	1.37	0.04	0.3
YQ_022_007	MCD007081	50.75	51.35	0.60	0.24	0.3
YQ_022_007	MCD007082	51.35	51.50	0.15	0.00	0.3
YQ_022_007	MCD007083	51.50	52.10	0.60	0.00	0.3
YQ_022_007	MCD007084	52.10	52.50	0.40	0.00	0.3
YQ_022_007	MCD007085	52.50	54.00	1.50	0.00	0.3
YQ_022_007	MCD007086	54.00	55.30	1.30	0.01	1.2
YQ_022_007	MCD007087	55.30	56.80	1.50	0.00	0.3
YQ_022_007	MCD007088	56.80	58.20	1.40	0.00	0.5
YQ_022_007	MCD007089	58.20	59.25	1.05	0.00	0.6
YQ_022_007	MCD007091	59.25	59.40	0.15	0.01	1.1
YQ_022_007	MCD007092	59.40	59.75	0.35	0.00	1.4
YQ_022_007	MCD007093	59.77	60.55	0.78	0.00	0.3
YQ_022_007	MCD007094	64.30	64.60	0.30	0.00	0.3
YQ_022_007	MCD007095	64.60	64.80	0.20	0.01	0.3
YQ_022_007	MCD007096	66.80	68.40	1.60	0.00	0.7
YQ_022_007	MCD007097	68.40	69.10	0.70	0.01	2.0
YQ_022_007	MCD007098	69.10	70.60	1.50	0.12	3.7
YQ_022_007	MCD007099	70.60	70.80	0.20	16.90	57.2
YQ_022_007	MCD007101	70.80	72.25	1.45	0.04	6.2
YQ_022_007	MCD007102	72.25	72.75	0.50	0.25	1.4
YQ_022_007	MCD007103	72.75	73.05	0.30	0.01	0.3
YQ_022_007	MCD007104	73.05	74.35	1.30	0.01	0.3
YQ_022_007	MCD007105	75.85	76.10	0.25	0.01	0.3
YQ_022_007	MCD007106	76.10	77.00	0.90	0.01	0.5
YQ_022_007	MCD007107	77.00	78.00	1.00	0.00	0.3
YQ_022_007	MCD007108	78.00	78.90	0.90	0.00	0.5
YQ_022_007	MCD007109	78.90	80.20	1.30	0.00	0.3
YQ_022_007	MCD007111	80.20	81.25	1.05	0.17	0.3
YQ_022_007	MCD007112	81.25	82.55	1.30	0.08	0.9
YQ_022_007	MCD007113	82.55	84.00	1.45	0.01	1.0
YQ_022_007	MCD007114	84.00	85.10	1.10	0.01	3.1
YQ_022_007	MCD007115	85.10	85.55	0.45	0.01	2.2
YQ_022_007	MCD007116	85.55	85.95	0.40	0.01	4.5
YQ_022_007	MCD007117	85.95	86.15	0.20	0.00	4.7
YQ_022_007	MCD007118	86.15	86.60	0.45	0.00	1.4
YQ_022_007	MCD007119	86.60	87.70	1.10	0.01	1.6
YQ_022_007	MCD007121	87.70	87.90	0.20	0.01	3.3
YQ_022_007	MCD007122	87.90	88.20	0.30	0.01	4.1
YQ_022_007	MCD007123	88.20	88.40	0.20	0.00	6.5
YQ_022_007	MCD007124	88.40	88.75	0.35	0.01	7.4

Yoquivo Gold-Silver Project - 2022 Drill Program - Assays						
Hole ID	Sample ID	From (m)	To (m)	Interval (m)	Au (ppm)	Ag (ppm)
YQ_022_007	MCD007125	88.75	90.00	1.25	0.00	0.6
YQ_022_007	MCD007126	101.40	102.45	1.05	0.02	0.3
YQ_022_007	MCD007127	102.45	103.35	0.90	0.02	0.3
YQ_022_007	MCD007128	103.35	104.15	0.80	0.01	0.8
YQ_022_007	MCD007129	104.15	105.20	1.05	0.01	0.3
YQ_022_007	MCD007131	105.20	106.30	1.10	0.01	0.5
YQ_022_007	MCD007132	106.30	106.80	0.50	0.01	0.3
YQ_022_007	MCD007133	106.80	108.00	1.20	0.01	0.3
YQ_022_007	MCD007134	108.00	108.60	0.60	0.01	0.3
YQ_022_007	MCD007135	108.60	109.05	0.45	0.01	0.6
YQ_022_007	MCD007136	112.50	112.80	0.30	0.02	3.0
YQ_022_007	MCD007137	112.80	113.10	0.30	0.01	1.3
YQ_022_007	MCD007138	113.10	114.00	0.90	0.02	3.6
YQ_022_007	MCD007139	155.00	155.45	0.45	0.01	1.0
YQ_022_007	MCD007141	155.45	155.80	0.35	0.01	0.3
YQ_022_007	MCD007142	155.80	156.30	0.50	0.00	0.3
YQ_022_007	MCD007143	163.50	163.90	0.40	0.02	2.3
YQ_022_007	MCD007144	163.90	164.40	0.50	0.04	4.5
YQ_022_007	MCD007145	164.40	165.00	0.60	0.02	1.0
YQ_022_007	MCD007146	171.50	171.80	0.30	0.00	0.3
YQ_022_007	MCD007147	171.80	172.55	0.75	0.01	0.3
YQ_022_008	MCD007159	11.00	11.50	0.50	0.00	0.5
YQ_022_008	MCD007161	11.50	12.70	1.20	0.00	1.8
YQ_022_008	MCD007162	12.70	13.65	0.95	0.00	0.9
YQ_022_008	MCD007163	13.65	14.60	0.95	0.00	1.4
YQ_022_008	MCD007164	14.60	15.30	0.70	0.02	2.1
YQ_022_008	MCD007165	28.60	29.30	0.70	0.13	8.9
YQ_022_008	MCD007166	44.90	45.95	1.05	0.15	13.2
YQ_022_008	MCD007167	45.95	47.15	1.20	0.04	4.5
YQ_022_008	MCD007168	47.15	47.90	0.75	0.20	128.0
YQ_022_008	MCD007169	47.90	48.50	0.60	0.04	12.0
YQ_022_008	MCD007171	66.35	67.80	1.45	0.07	14.1
YQ_022_008	MCD007172	67.80	69.00	1.20	0.17	19.9
YQ_022_008	MCD007173	69.00	69.20	0.20	0.47	72.2
YQ_022_008	MCD007174	69.20	70.00	0.80	0.01	0.8
YQ_022_008	MCD007175	70.00	70.70	0.70	0.03	2.2
YQ_022_008	MCD007176	74.90	75.90	1.00	0.01	0.6
YQ_022_008	MCD007177	75.90	76.10	0.20	0.23	22.0
YQ_022_008	MCD007178	76.10	76.90	0.80	0.04	10.1
YQ_022_008	MCD007179	76.90	78.00	1.10	0.60	37.6
YQ_022_008	MCD007181	78.00	78.20	0.20	0.28	37.3
YQ_022_008	MCD007182	78.20	79.60	1.40	0.01	1.2
YQ_022_008	MCD007183	96.00	97.15	1.15	0.00	0.3
YQ_022_008	MCD007184	97.15	98.05	0.90	0.02	2.6
YQ_022_008	MCD007185	98.05	99.00	0.95	0.01	2.0
YQ_022_008	MCD007186	99.00	100.20	1.20	0.00	0.3
YQ_022_008	MCD007187	100.20	101.35	1.15	0.01	1.0
YQ_022_008	MCD007188	101.35	102.05	0.70	0.01	1.1
YQ_022_008	MCD007189	102.05	102.60	0.55	0.01	1.3
YQ_022_008	MCD007191	102.60	104.00	1.40	0.01	0.7
YQ_022_008	MCD007192	107.55	108.60	1.05	0.02	0.5
YQ_022_008	MCD007193	108.60	109.90	1.30	0.01	0.3

Yoquivo Gold-Silver Project - 2022 Drill Program - Assays						
Hole ID	Sample ID	From (m)	To (m)	Interval (m)	Au (ppm)	Ag (ppm)
YQ_022_008	MCD007194	109.90	110.60	0.70	0.01	2.0
YQ_022_008	MCD007195	110.60	111.65	1.05	0.01	1.0
YQ_022_008	MCD007196	120.40	121.70	1.30	0.01	1.8
YQ_022_008	MCD007197	121.70	122.10	0.40	0.05	4.5
YQ_022_008	MCD007198	122.10	123.00	0.90	0.01	1.7
YQ_022_008	MCD007199	123.00	123.95	0.95	0.02	2.5
YQ_022_008	MCD007201	123.95	125.25	1.30	0.03	5.4
YQ_022_008	MCD007202	125.25	126.00	0.75	0.01	1.5
YQ_022_008	MCD007203	141.50	141.90	0.40	30.80	5260.0
YQ_022_008	MCD007204	153.20	154.40	1.20	0.63	128.0
YQ_022_008	MCD007205	154.40	155.55	1.15	0.08	6.5
YQ_022_008	MCD007206	155.55	156.00	0.45	1.11	75.5
YQ_022_008	MCD007207	156.00	157.30	1.30	0.37	175.0
YQ_022_009	MCD007208	10.70	11.40	0.70	0.00	2.1
YQ_022_009	MCD007209	11.40	12.20	0.80	0.02	4.2
YQ_022_009	MCD007211	12.20	13.30	1.10	0.00	0.5
YQ_022_009	MCD007212	13.30	13.90	0.60	0.00	1.0
YQ_022_009	MCD007213	13.90	15.00	1.10	0.00	1.4
YQ_022_009	MCD007214	15.00	15.80	0.80	0.00	0.6
YQ_022_009	MCD007215	15.80	16.65	0.85	0.00	0.3
YQ_022_009	MCD007216	16.65	17.70	1.05	0.00	0.3
YQ_022_009	MCD007217	17.70	18.20	0.50	0.00	0.3
YQ_022_009	MCD007218	18.20	18.45	0.25	0.00	0.3
YQ_022_009	MCD007219	18.45	19.10	0.65	0.00	0.3
YQ_022_009	MCD007221	31.55	32.70	1.15	0.00	0.3
YQ_022_009	MCD007222	53.20	54.45	1.25	0.01	0.3
YQ_022_009	MCD007223	54.45	55.95	1.50	0.00	0.3
YQ_022_009	MCD007224	55.95	57.00	1.05	0.00	0.3
YQ_022_009	MCD007225	57.00	58.40	1.40	0.00	0.3
YQ_022_009	MCD007226	58.40	59.80	1.40	0.00	0.9
YQ_022_009	MCD007227	59.80	61.20	1.40	0.00	0.7
YQ_022_009	MCD007228	61.20	62.30	1.10	0.00	0.6
YQ_022_009	MCD007229	62.30	63.20	0.90	0.00	0.3
YQ_022_009	MCD007231	70.95	72.40	1.45	0.01	1.1
YQ_022_009	MCD007232	72.40	73.35	0.95	0.00	0.3
YQ_022_009	MCD007233	73.35	74.70	1.35	0.02	1.9
YQ_022_009	MCD007234	74.70	75.75	1.05	0.02	2.5
YQ_022_009	MCD007235	75.75	76.25	0.50	0.03	1.7
YQ_022_009	MCD007236	76.25	77.25	1.00	0.01	0.7
YQ_022_009	MCD007237	77.25	78.00	0.75	0.01	0.3
YQ_022_009	MCD007238	78.00	79.20	1.20	0.00	0.3
YQ_022_009	MCD007239	79.20	80.40	1.20	0.01	0.3
YQ_022_009	MCD007241	80.40	81.55	1.15	0.00	0.3
YQ_022_009	MCD007242	81.55	82.15	0.60	0.00	0.5
YQ_022_009	MCD007243	82.15	83.20	1.05	0.00	1.1
YQ_022_009	MCD007244	83.20	84.30	1.10	0.03	5.6
YQ_022_009	MCD007245	84.30	85.45	1.15	0.02	3.3
YQ_022_009	MCD007246	85.45	86.50	1.05	0.01	1.4
YQ_022_009	MCD007247	86.60	87.95	1.35	0.01	2.2
YQ_022_009	MCD007248	87.95	89.25	1.30	0.05	7.6
YQ_022_009	MCD007249	98.60	99.90	1.30	0.02	2.9
YQ_022_009	MCD007251	99.90	101.25	1.35	0.01	2.2



Yoquivo Gold-Silver Project - 2022 Drill Program - Assays						
Hole ID	Sample ID	From (m)	To (m)	Interval (m)	Au (ppm)	Ag (ppm)
YQ_022_009	MCD007252	101.25	101.60	0.35	0.06	9.0
YQ_022_009	MCD007254	101.60	103.00	1.40	0.00	1.3
YQ_022_009	MCD007255	103.00	104.35	1.35	0.01	3.1
YQ_022_009	MCD007256	104.35	105.65	1.30	0.04	5.6
YQ_022_009	MCD007257	105.65	106.80	1.15	0.01	0.6
YQ_022_009	MCD007258	113.00	114.00	1.00	0.03	6.1
YQ_022_009	MCD007259	114.00	114.80	0.80	0.01	2.6
YQ_022_009	MCD007261	114.80	116.20	1.40	0.02	4.1
YQ_022_009	MCD007262	116.20	117.45	1.25	0.04	7.8
YQ_022_009	MCD007263	117.45	118.00	0.55	0.03	5.2
YQ_022_009	MCD007264	118.00	118.55	0.55	0.03	4.3
YQ_022_009	MCD007265	118.55	119.00	0.45	0.22	34.5
YQ_022_009	MCD007266	119.00	119.45	0.45	0.41	15.4
YQ_022_009	MCD007268	119.45	120.90	1.45	0.02	2.8
YQ_022_009	MCD007269	120.90	121.95	1.05	0.03	4.0
YQ_022_009	MCD007271	121.95	123.10	1.15	0.08	15.7
YQ_022_009	MCD007272	123.10	124.30	1.20	0.10	17.9
YQ_022_009	MCD007273	124.30	125.70	1.40	0.10	22.9
YQ_022_009	MCD007274	125.70	126.45	0.75	0.08	17.0
YQ_022_009	MCD007275	126.45	127.55	1.10	0.04	6.0
YQ_022_009	MCD007276	127.55	128.70	1.15	0.02	4.9
YQ_022_009	MCD007277	128.70	129.00	0.30	0.51	1735.0
YQ_022_009	MCD007278	129.00	130.40	1.40	0.05	58.8
YQ_022_009	MCD007279	130.40	131.90	1.50	0.02	11.0
YQ_022_009	MCD007281	131.90	133.10	1.20	0.02	6.6
YQ_022_009	MCD007282	133.10	133.70	0.60	0.61	178.0
YQ_022_009	MCD007283	133.70	134.30	0.60	0.12	37.3
YQ_022_009	MCD007284	134.30	135.30	1.00	0.28	75.7
YQ_022_009	MCD007285	135.30	136.00	0.70	0.11	12.9
YQ_022_009	MCD007286	136.00	137.55	1.55	0.34	80.0
YQ_022_009	MCD007287	137.55	138.60	1.05	0.16	25.0
YQ_022_009	MCD007288	138.60	139.50	0.90	0.04	7.9
YQ_022_009	MCD007289	139.50	140.40	0.90	0.01	4.2
YQ_022_009	MCD007291	140.40	141.40	1.00	0.01	2.5
YQ_022_009	MCD007292	150.00	151.00	1.00	0.00	0.5
YQ_022_009	MCD007293	151.00	152.50	1.50	0.00	0.7
YQ_022_009	MCD007294	152.50	153.70	1.20	0.00	0.3
YQ_022_009	MCD007295	179.40	180.35	0.95	0.09	10.4
YQ_022_009	MCD007296	180.35	180.95	0.60	0.24	20.2
YQ_022_009	MCD007297	180.95	181.60	0.65	0.01	0.8
YQ_022_009	MCD007298	181.60	182.60	1.00	0.11	6.6
YQ_022_009	MCD007299	191.80	193.00	1.20	0.11	13.7
YQ_022_009	MCD007301	193.00	193.20	0.20	0.25	29.8
YQ_022_009	MCD007302	193.20	194.60	1.40	0.05	7.8
YQ_022_009	MCD007303	211.70	213.00	1.30	0.06	6.7
YQ_022_009	MCD007304	213.00	214.50	1.50	0.13	10.6
YQ_022_009	MCD007305	214.50	215.05	0.55	0.02	6.1
YQ_022_009	MCD007306	215.05	216.10	1.05	0.10	9.7
YQ_022_009	MCD007307	216.10	217.25	1.15	0.04	3.7
YQ_022_009	MCD007308	223.70	224.80	1.10	0.12	14.7
YQ_022_009	MCD007309	224.80	225.90	1.10	0.14	5.9
YQ_022_009	MCD007311	225.90	227.00	1.10	1.01	159.0

Yoquivo Gold-Silver Project - 2022 Drill Program - Assays						
Hole ID	Sample ID	From (m)	To (m)	Interval (m)	Au (ppm)	Ag (ppm)
YQ_022_009	MCD007312	227.00	227.45	0.45	1.16	212.0
YQ_022_009	MCD007313	227.45	228.10	0.65	0.10	16.9
YQ_022_009	MCD007314	228.10	229.25	1.15	0.49	59.1
YQ_022_009	MCD007315	229.25	230.10	0.85	0.41	44.8
YQ_022_009	MCD007316	230.10	230.40	0.30	0.14	21.8
YQ_022_009	MCD007317	230.40	231.00	0.60	0.13	22.0
YQ_022_009	MCD007318	231.00	231.90	0.90	0.39	82.1
YQ_022_009	MCD007319	231.90	232.75	0.85	0.78	131.0
YQ_022_009	MCD007321	232.75	233.25	0.50	0.21	75.0
YQ_022_009	MCD007322	233.25	234.10	0.85	0.58	160.0
YQ_022_009	MCD007323	234.10	235.15	1.05	0.78	141.0
YQ_022_009	MCD007324	235.15	236.40	1.25	0.61	116.0
YQ_022_009	MCD007325	236.40	237.40	1.00	0.85	141.0
YQ_022_009	MCD007326	237.40	238.95	1.55	0.20	30.3
YQ_022_009	MCD007327	238.95	239.60	0.65	0.66	83.6
YQ_022_009	MCD007328	239.60	240.00	0.40	0.40	82.6
YQ_022_009	MCD007329	240.00	240.85	0.85	0.77	170.0
YQ_022_009	MCD007331	240.85	242.25	1.40	0.25	41.4
YQ_022_009	MCD007332	242.25	243.05	0.80	0.12	22.2
YQ_022_009	MCD007333	243.05	244.00	0.95	0.19	24.7
YQ_022_009	MCD007334	244.00	244.70	0.70	0.09	10.5
YQ_022_009	MCD007335	244.70	245.35	0.65	0.03	2.2
YQ_022_009	MCD007336	245.35	245.90	0.55	0.01	1.1
YQ_022_009	MCD007337	245.90	246.45	0.55	0.01	0.7
YQ_022_009	MCD007338	246.45	247.00	0.55	0.01	2.6
YQ_022_009	MCD007339	247.00	247.60	0.60	0.07	10.3
YQ_022_009	MCD007341	247.60	248.20	0.60	0.14	23.9
YQ_022_009	MCD007342	248.20	249.65	1.45	0.02	4.2
YQ_022_009	MCD007343	249.65	250.35	0.70	0.06	5.9
YQ_022_009	MCD007344	250.35	251.35	1.00	0.01	0.7
YQ_022_009	MCD007345	251.35	252.50	1.15	0.01	2.1
YQ_022_009	MCD007346	252.50	253.45	0.95	0.14	13.2
YQ_022_009	MCD007347	253.45	254.00	0.55	0.40	33.7
YQ_022_009	MCD007348	254.00	255.30	1.30	0.23	33.7
YQ_022_009	MCD007349	255.30	256.70	1.40	0.36	1.5
YQ_022_009	MCD007351	256.70	258.00	1.30	0.01	3.4
YQ_022_009	MCD007352	258.00	258.90	0.90	0.02	3.8
YQ_022_009	MCD007353	258.90	259.30	0.40	0.03	4.0
YQ_022_009	MCD007354	259.30	259.90	0.60	0.31	10.4
YQ_022_009	MCD007355	259.90	260.25	0.35	0.06	6.5
YQ_022_009	MCD007356	260.25	261.60	1.35	0.08	9.9
YQ_022_009	MCD007357	261.60	262.65	1.05	0.44	46.9
YQ_022_009	MCD007358	262.65	263.45	0.80	0.56	52.9
YQ_022_009	MCD007359	263.45	264.40	0.95	4.84	174.0
YQ_022_009	MCD007361	264.40	265.70	1.30	0.37	35.2
YQ_022_009	MCD007362	265.70	266.25	0.55	0.56	76.9
YQ_022_009	MCD007363	266.25	267.00	0.75	0.78	98.4
YQ_022_009	MCD007364	267.00	268.30	1.30	0.36	43.1
YQ_022_009	MCD007365	268.30	269.05	0.75	0.36	35.1
YQ_022_009	MCD007366	269.05	270.00	0.95	0.78	104.0
YQ_022_009	MCD007367	270.00	271.20	1.20	0.30	42.2
YQ_022_009	MCD007368	271.20	272.65	1.45	0.84	109.0

Yoquivo Gold-Silver Project - 2022 Drill Program - Assays						
Hole ID	Sample ID	From (m)	To (m)	Interval (m)	Au (ppm)	Ag (ppm)
YQ_022_009	MCD007369	272.65	274.00	1.35	0.21	12.4
YQ_022_009	MCD007371	274.00	275.05	1.05	0.23	26.2
YQ_022_009	MCD007372	275.05	276.00	0.95	0.11	5.2
YQ_022_009	MCD007373	276.00	276.75	0.75	0.40	33.7
YQ_022_009	MCD007374	276.75	277.70	0.95	1.40	24.7
YQ_022_009	MCD007375	277.70	278.45	0.75	0.82	92.6
YQ_022_009	MCD007376	278.45	279.55	1.10	0.50	60.9
YQ_022_009	MCD007377	279.55	280.50	0.95	0.73	95.0
YQ_022_009	MCD007378	280.50	281.25	0.75	0.87	77.0
YQ_022_009	MCD007379	281.25	282.00	0.75	1.44	165.0
YQ_022_009	MCD007381	282.00	283.45	1.45	1.24	150.0
YQ_022_009	MCD007382	283.45	284.60	1.15	1.96	159.0
YQ_022_009	MCD007383	284.60	285.90	1.30	8.28	149.0
YQ_022_009	MCD007384	285.90	286.80	0.90	13.00	124.0
YQ_022_009	MCD007385	286.80	288.00	1.20	4.11	75.7
YQ_022_009	MCD007386	288.00	289.45	1.45	1.40	97.0
YQ_022_009	MCD007387	289.45	290.70	1.25	2.09	58.3
YQ_022_009	MCD007388	290.70	291.25	0.55	0.01	3.0
YQ_022_009	MCD007389	291.25	292.15	0.90	0.14	23.6
YQ_022_009	MCD007391	292.15	293.65	1.50	0.25	99.1
YQ_022_009	MCD007392	293.65	295.00	1.35	1.64	143.0
YQ_022_009	MCD007393	295.00	296.45	1.45	0.91	116.0
YQ_022_009	MCD007394	296.45	297.95	1.50	0.16	50.6
YQ_022_009	MCD007395	297.95	298.80	0.85	0.14	39.8
YQ_022_009	MCD007396	298.80	299.75	0.95	0.42	95.1
YQ_022_009	MCD007397	299.75	300.85	1.10	1.03	119.0
YQ_022_009	MCD007398	300.85	301.90	1.05	0.40	57.1
YQ_022_009	MCD007399	301.90	302.75	0.85	0.12	12.8
YQ_022_009	MCD007401	302.75	303.20	0.45	0.10	28.8
YQ_022_009	MCD007402	303.20	304.65	1.45	0.26	73.6
YQ_022_009	MCD007403	304.65	306.00	1.35	1.31	43.8